

ZĪMĒŠANA

2 0 2 2 / 2 0 2 3

Rēzeknes Mākslas un dizaina vidusskolas
Mākslas skola, mācību priekšmets Zīmēšana,
skolotāja Māra Zīliņa

2 . K L A S E

Uzdevumi:

1. Simetrija:

1.1. Koka simetrisks attēlojums;

1.2. Elementu simetrisks atkārtojums apļa formā.

2. Dabas formu stilizācija - skices.

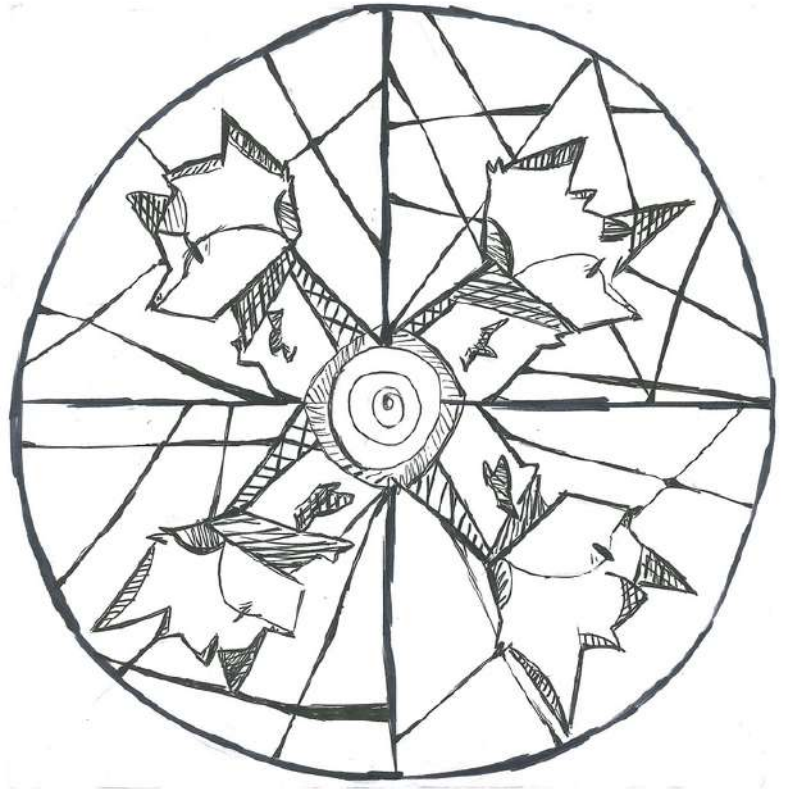
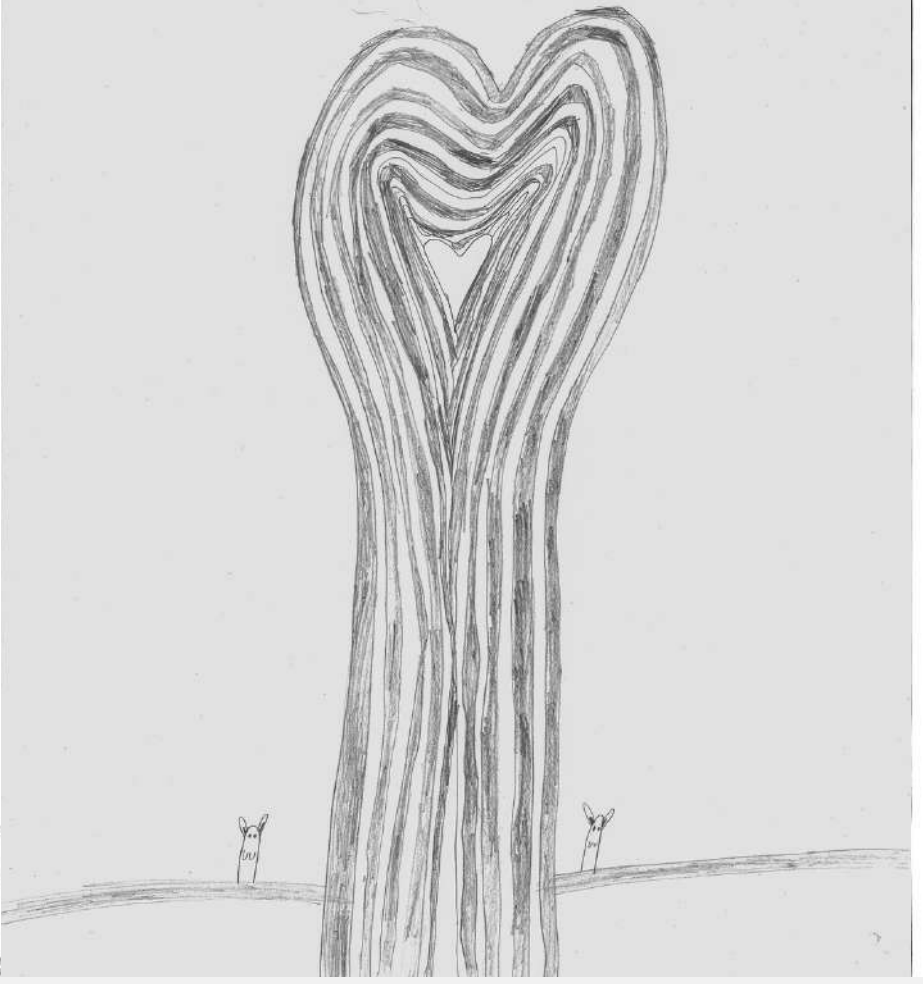
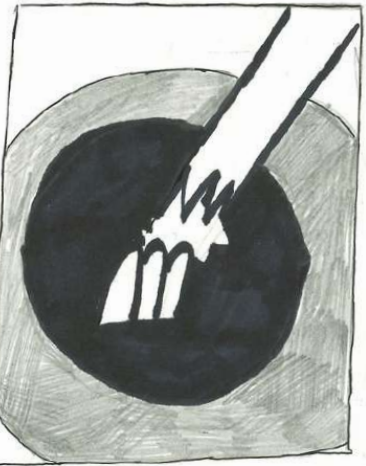
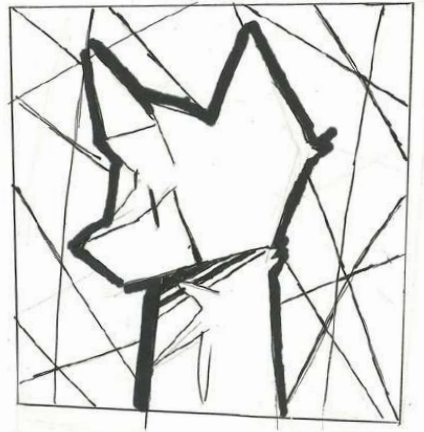
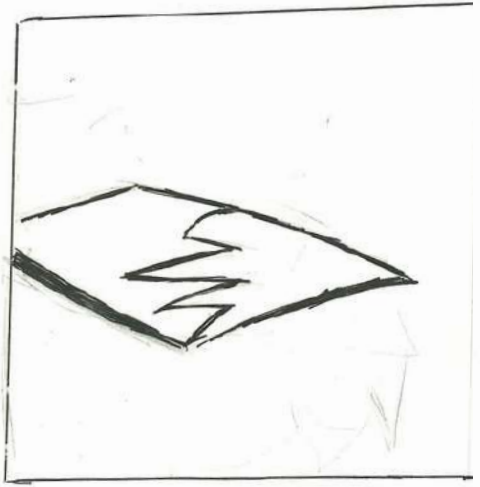
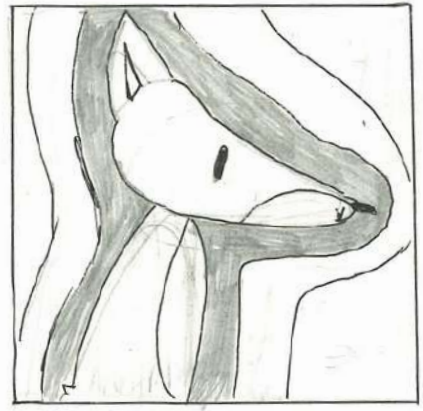
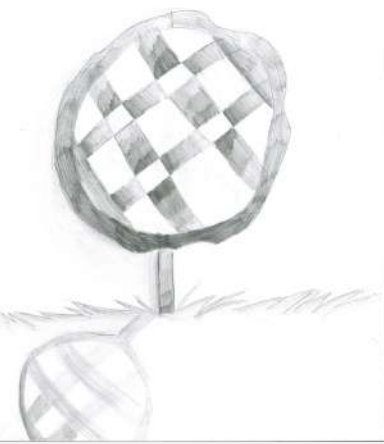
3. Kuba perspektīva.

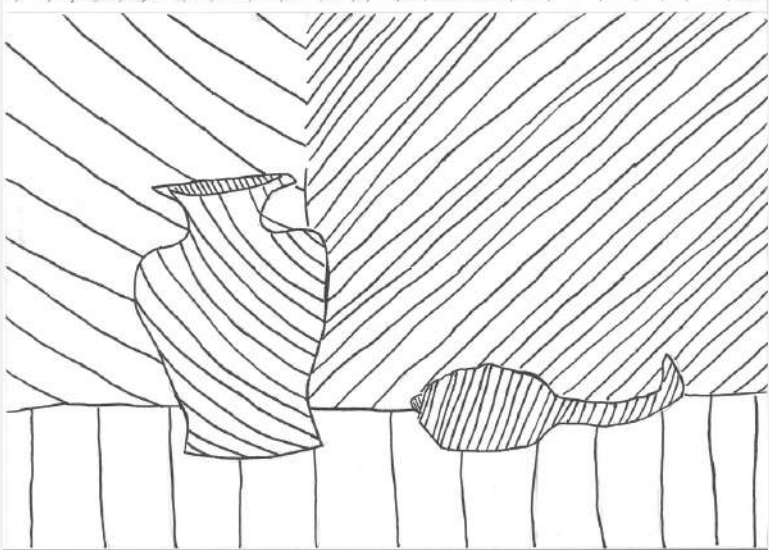
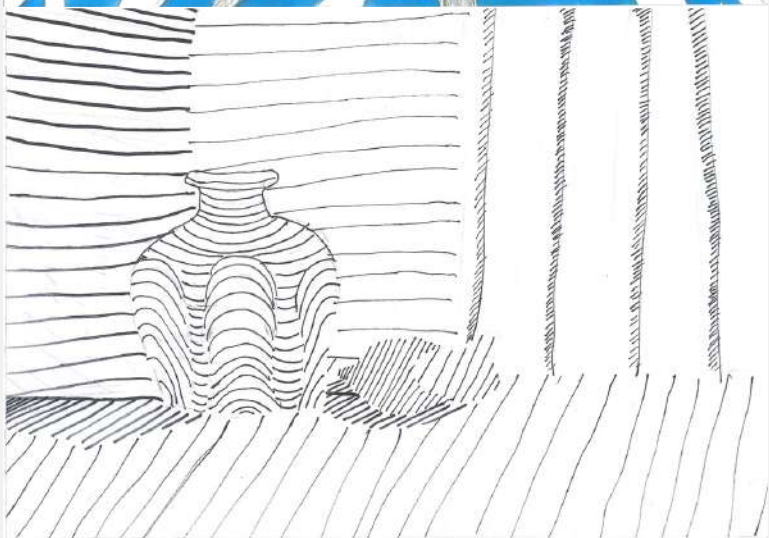
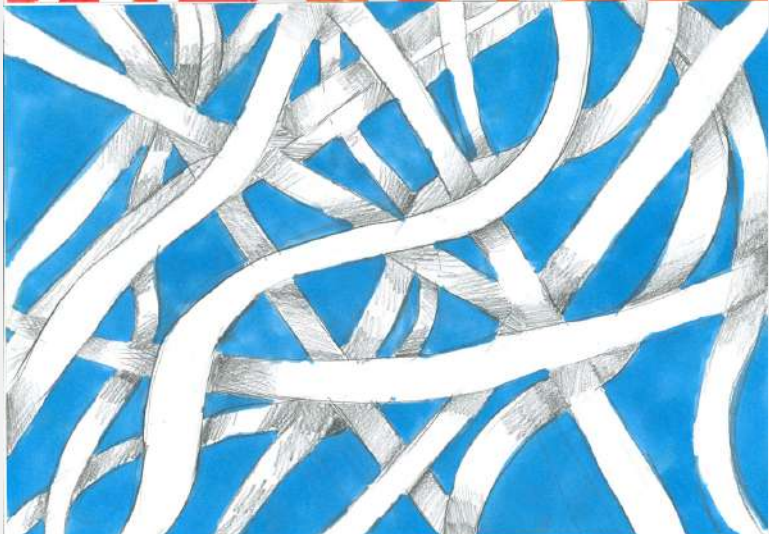
4. Kustības iespaida attēlošana - "Sēņu augšana", "Lapsas piedzīvojums", "Nejaušības".

5. Tonalitāte - priekšmetu uzstādījumu zīmējumi ar dažādas tumšuma pakāpes laukumiem un ar gaismēnas dalījumu.

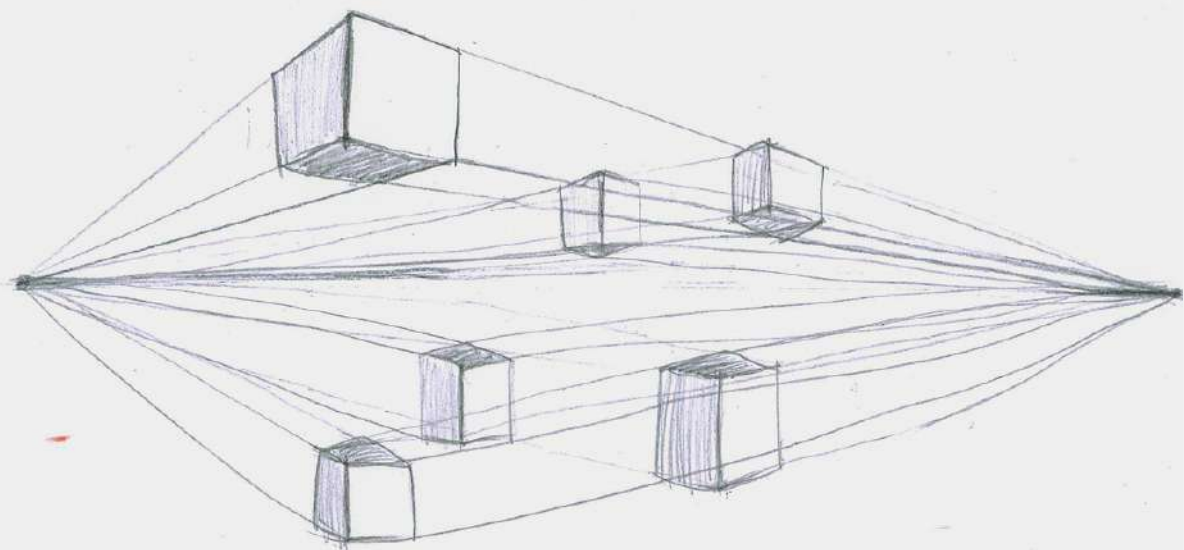
0107

2

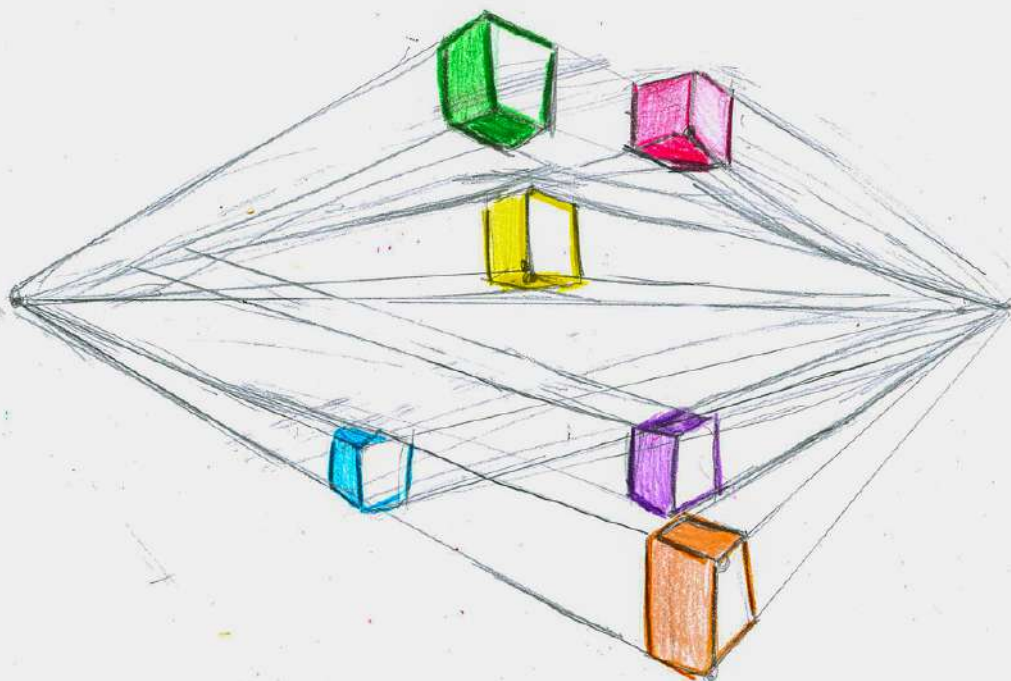




2.A.



koLo.00a



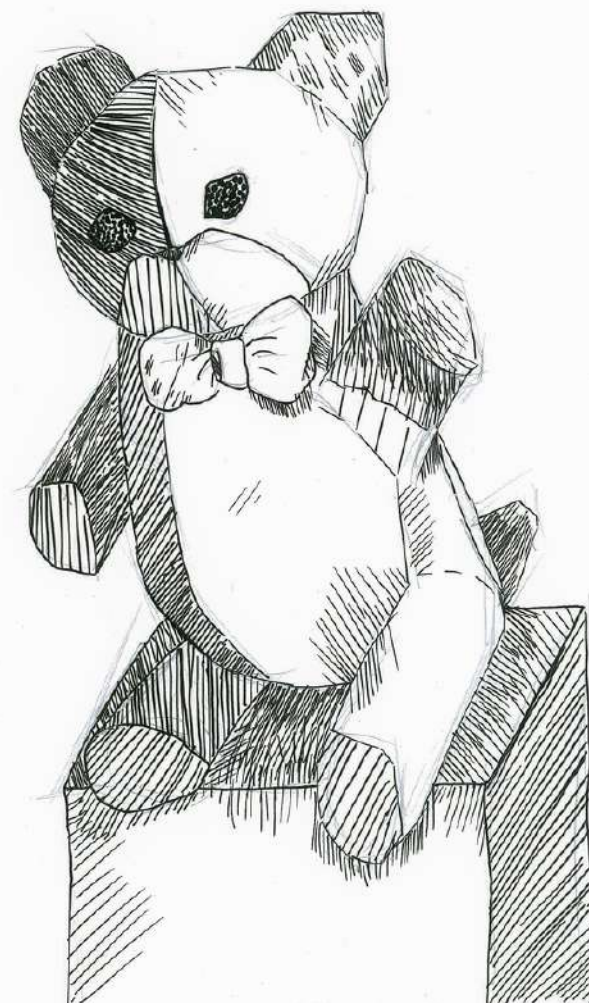
BEATE PO. SA 2. B



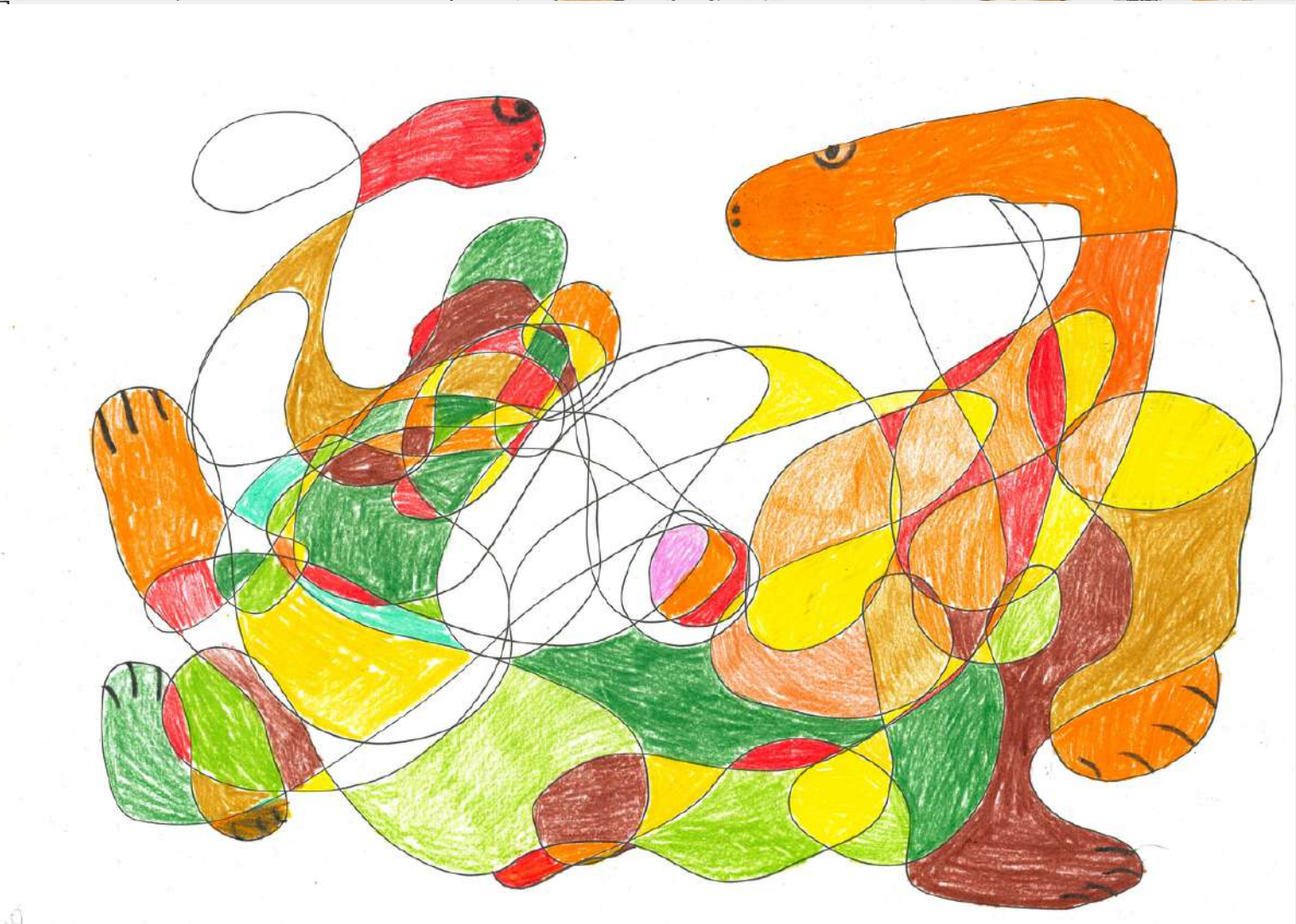
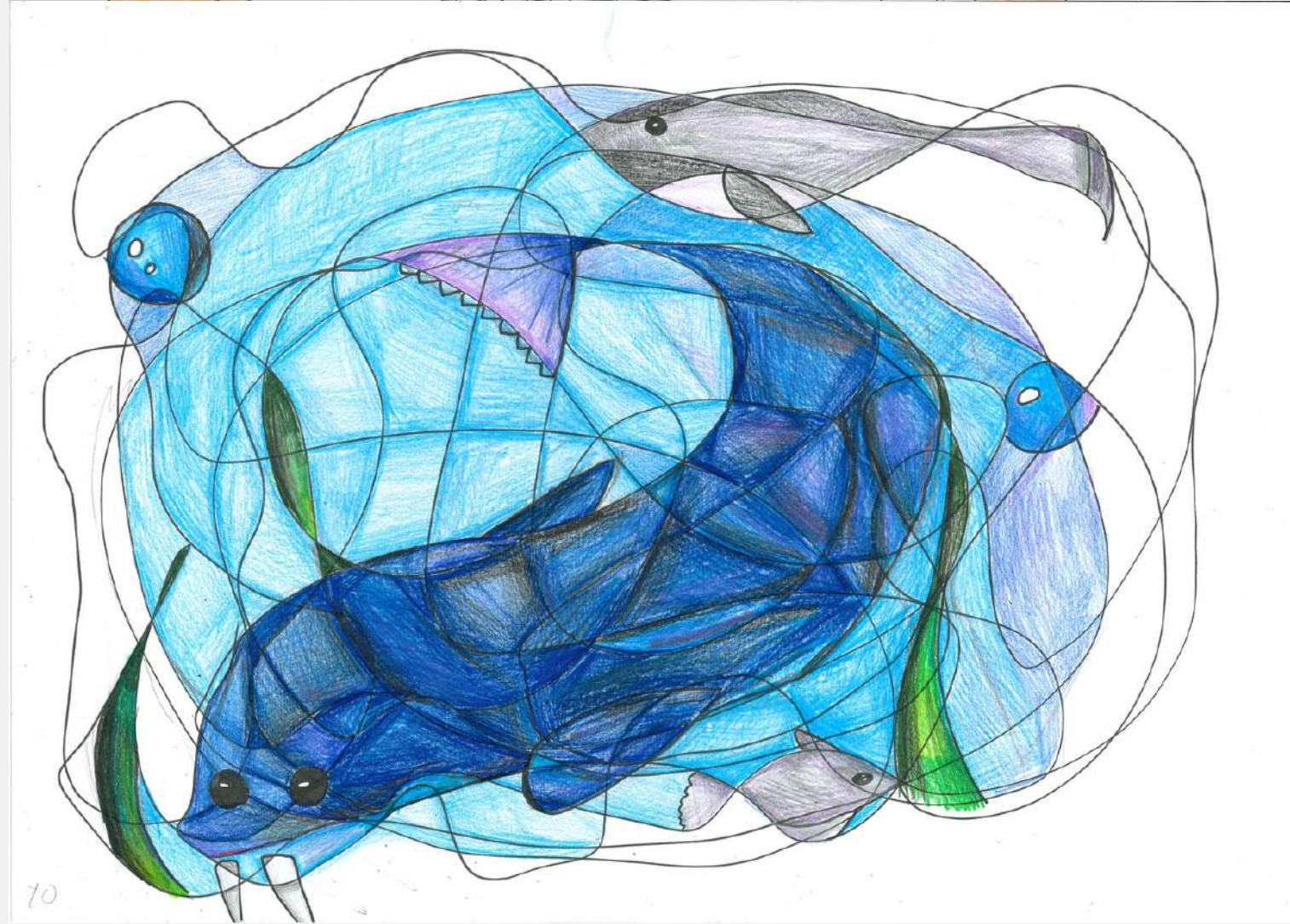
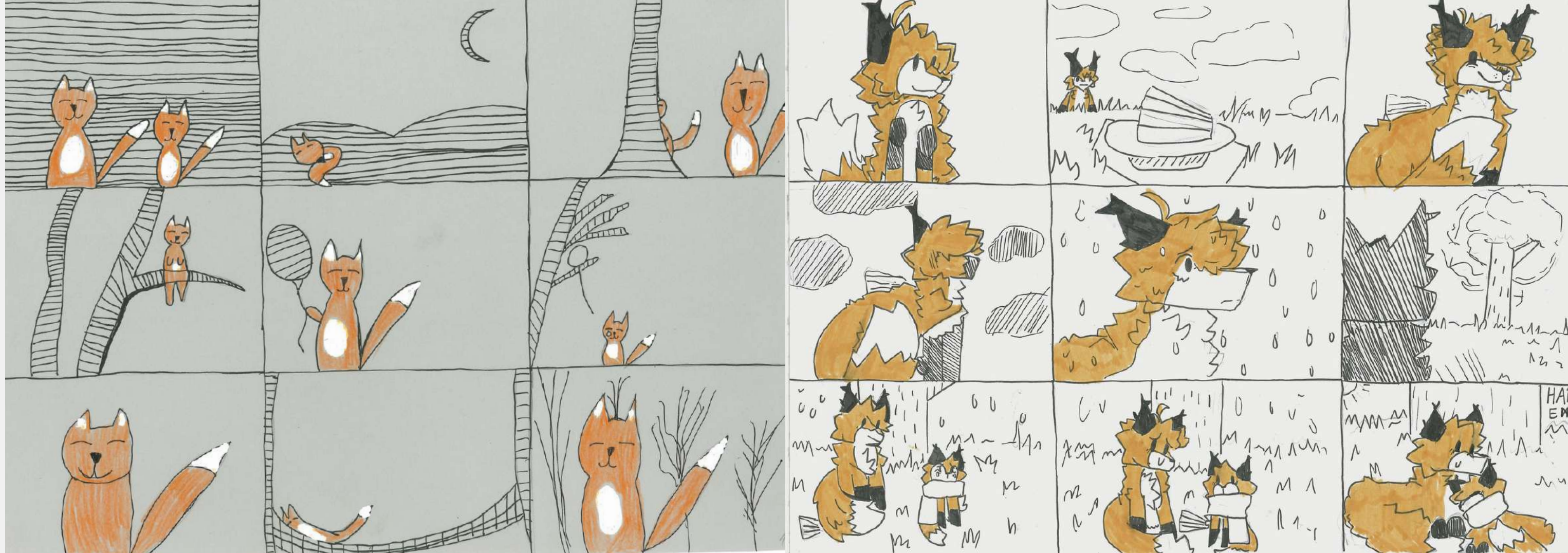
BEATE P. 2.1

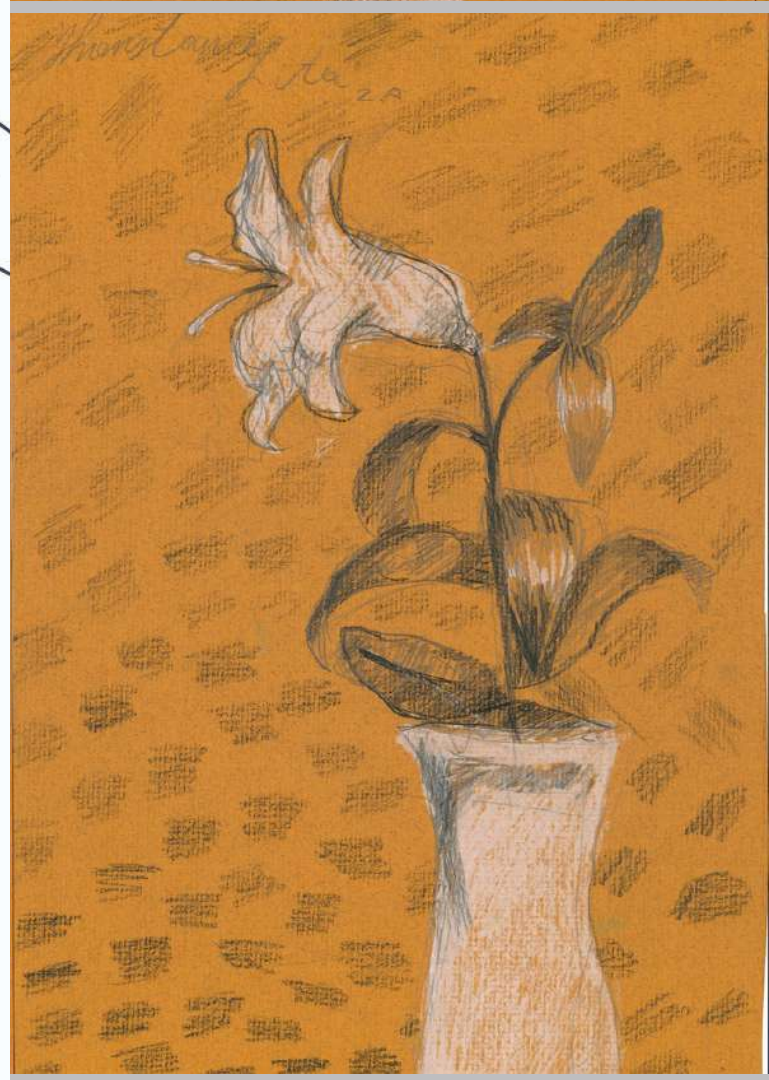
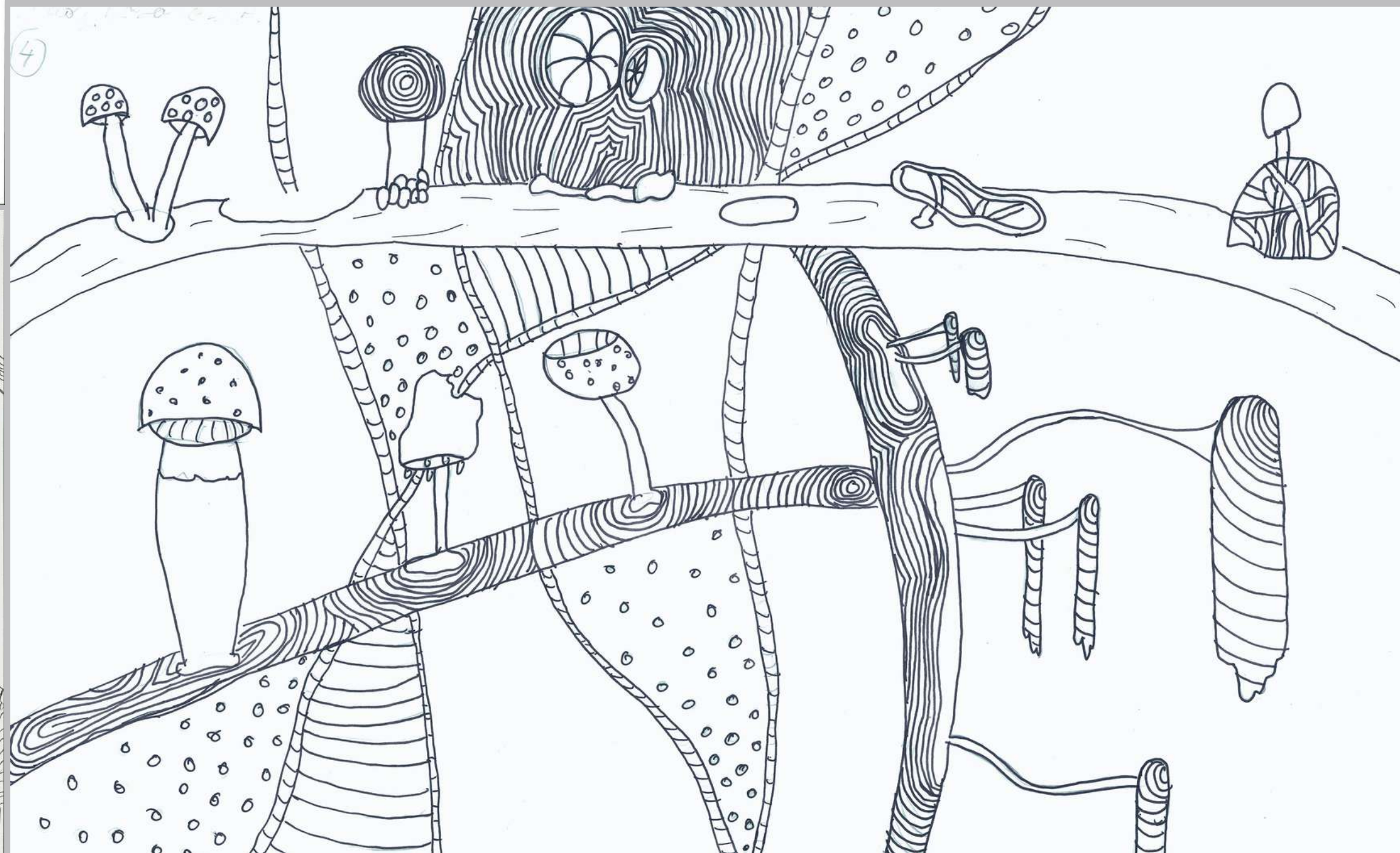
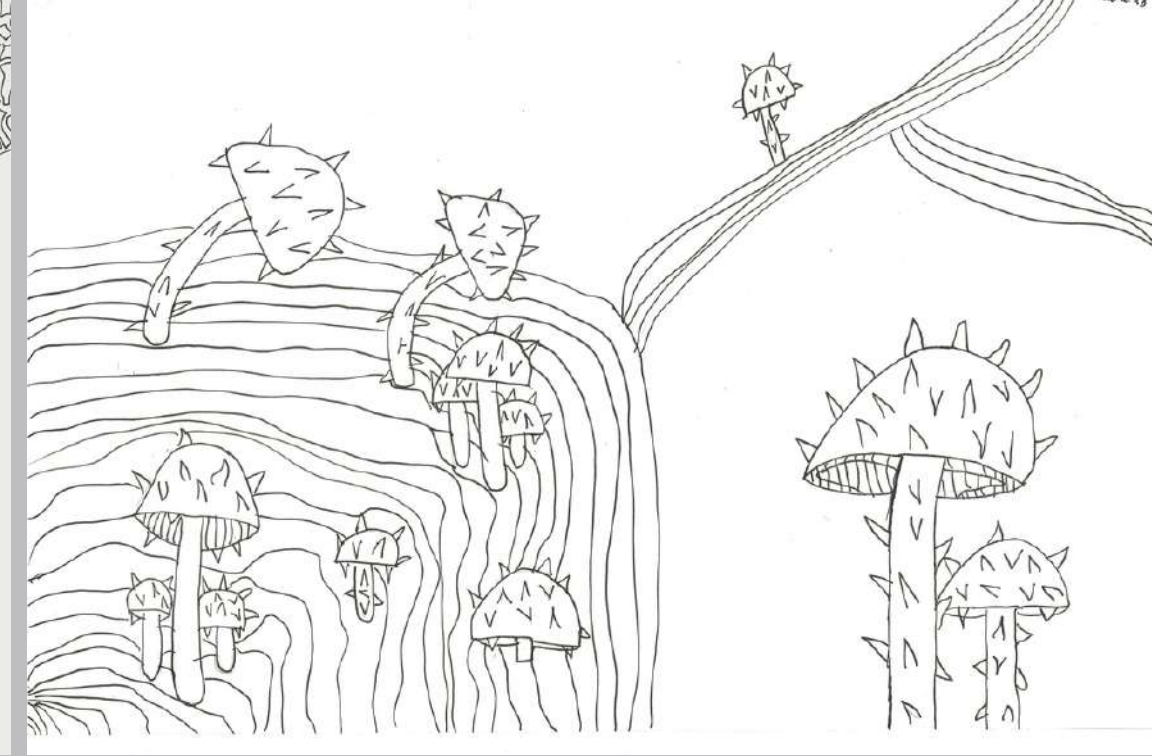
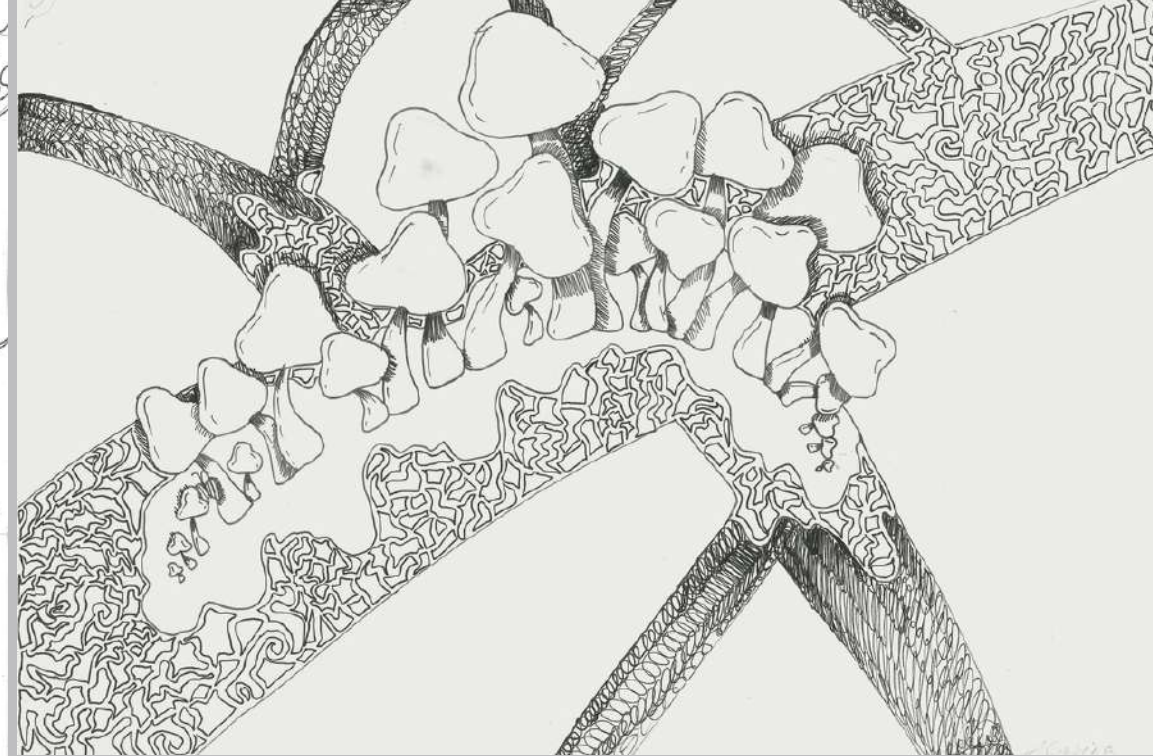
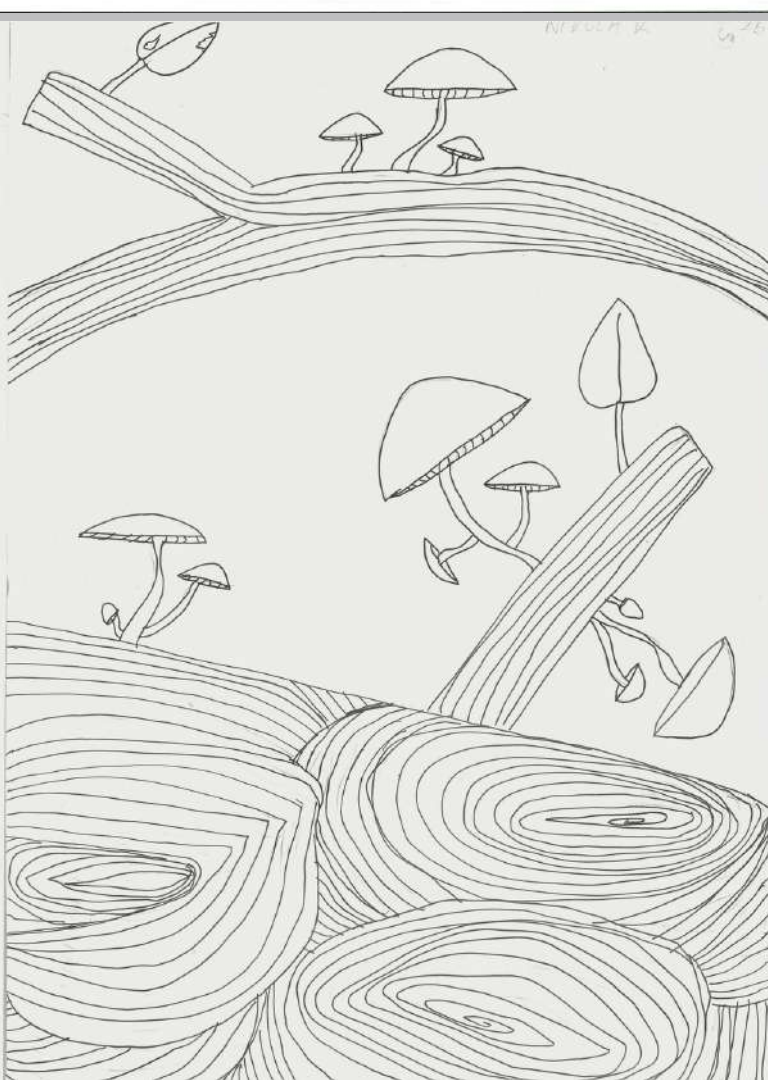
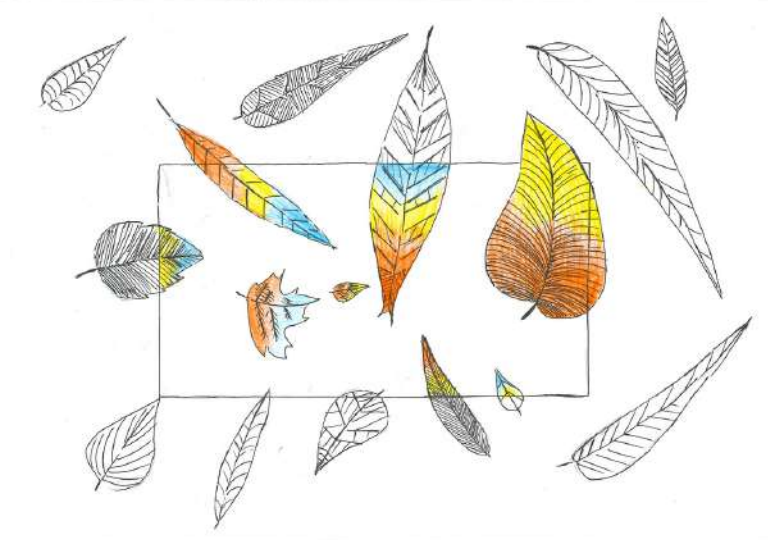
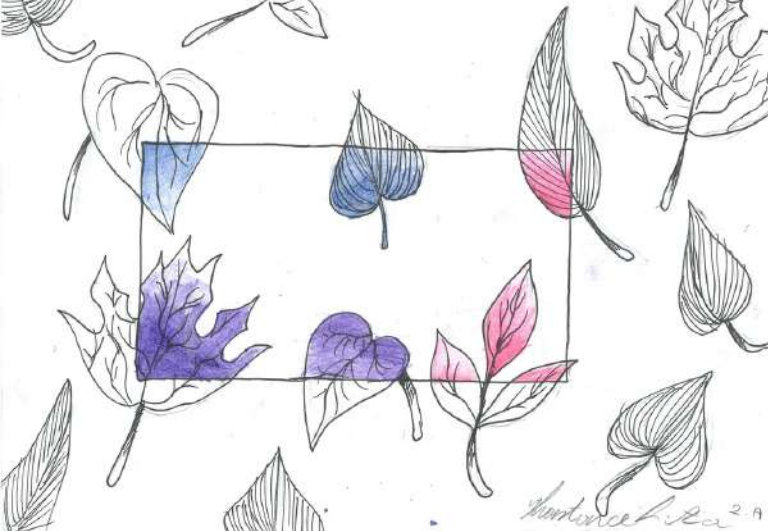


0



0

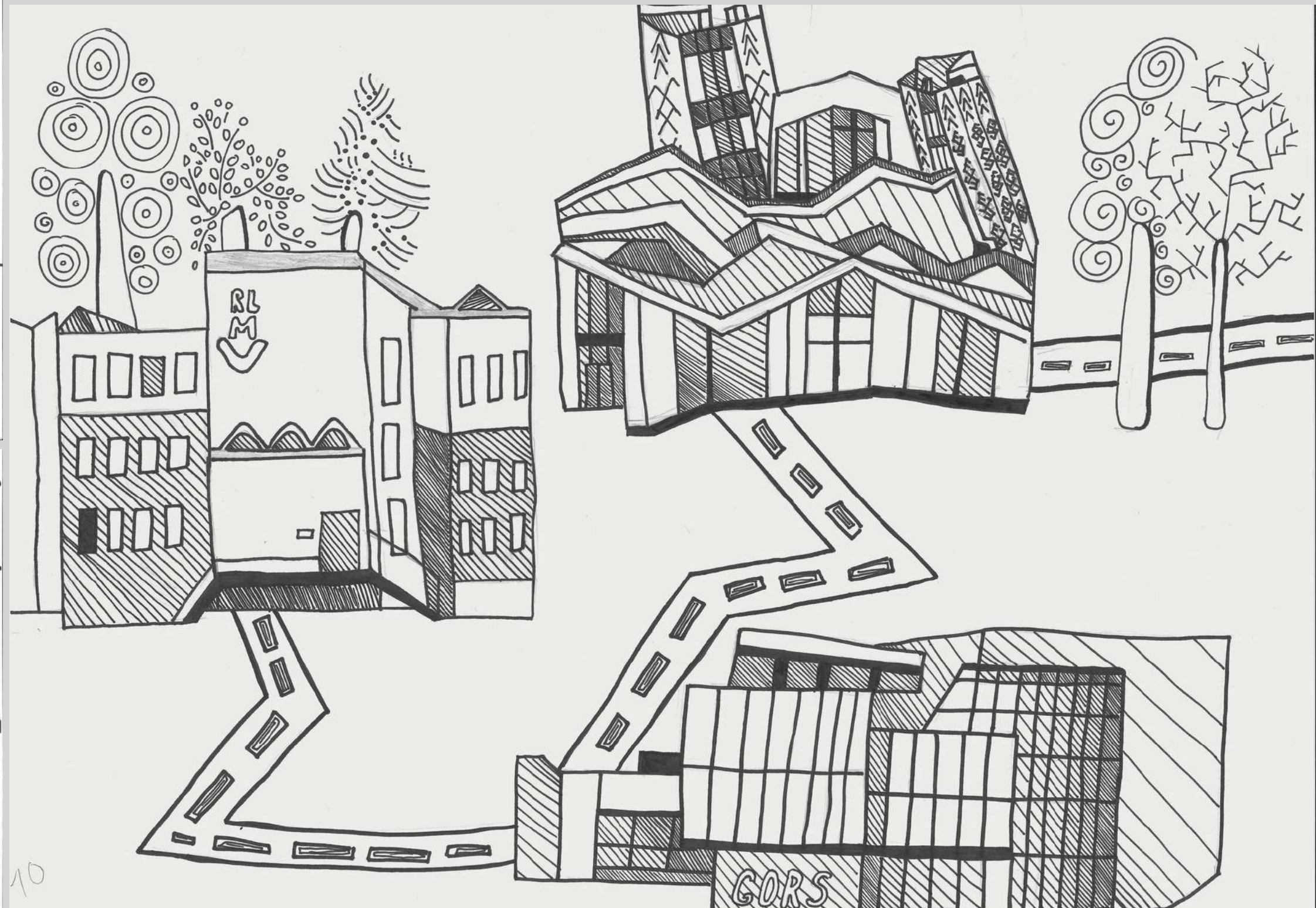


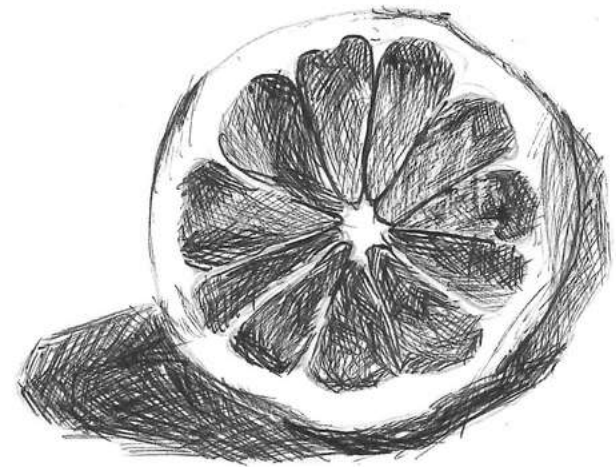


4 . K L A S E

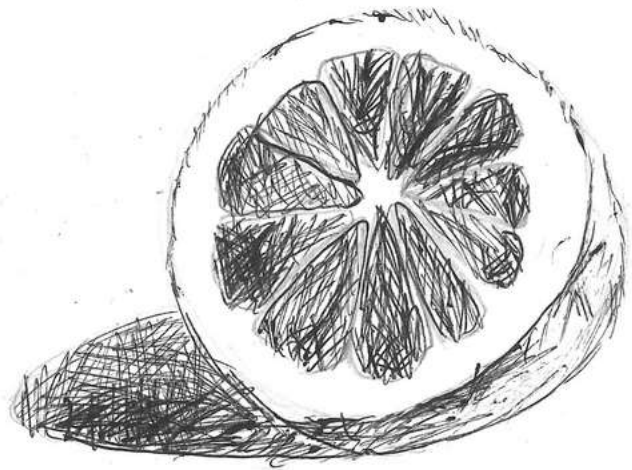
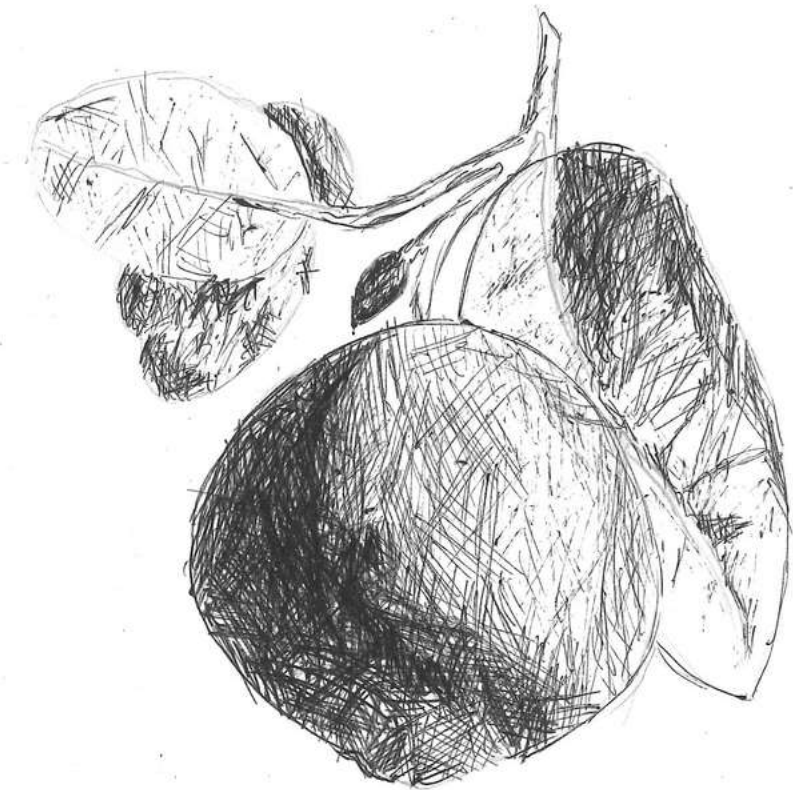
Uzdevumi:

1. Dabas formu lineāras un tonālas studijas.
2. Radošs vides zīmējums "Rēzeknes karte".
3. Perspektīvas un štriha vingrinājumi.
4. Konstruktīvs un tonāls telpisku priekšmetu attēlojums plaknē.
5. Gaismēnas attēlošana.

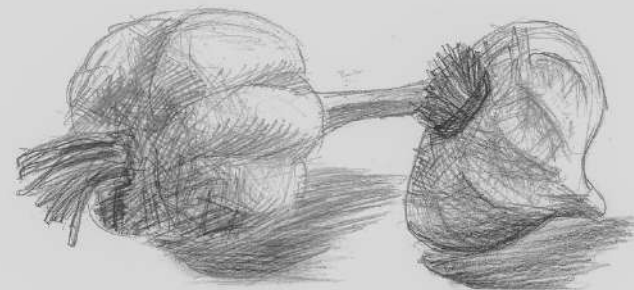
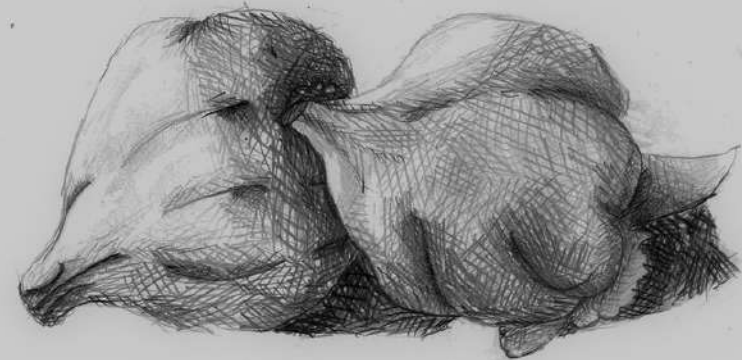
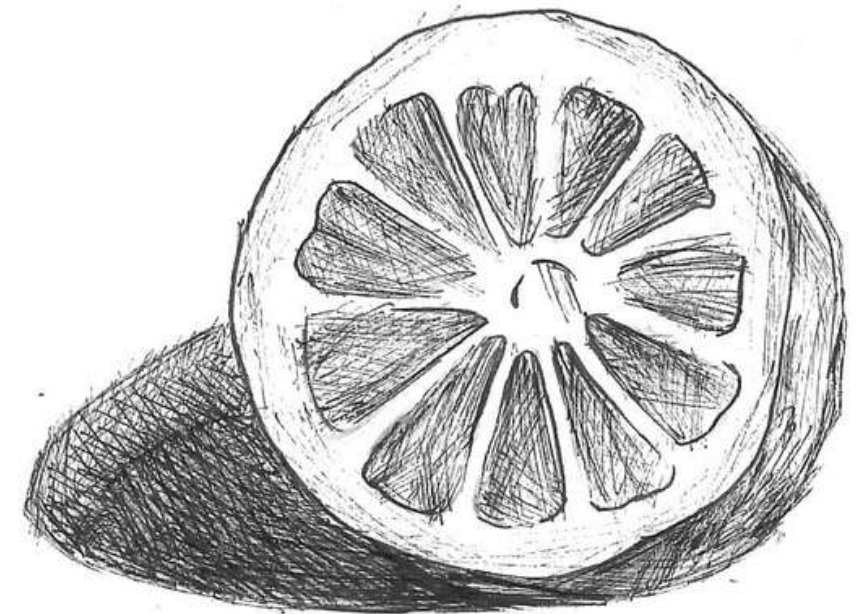




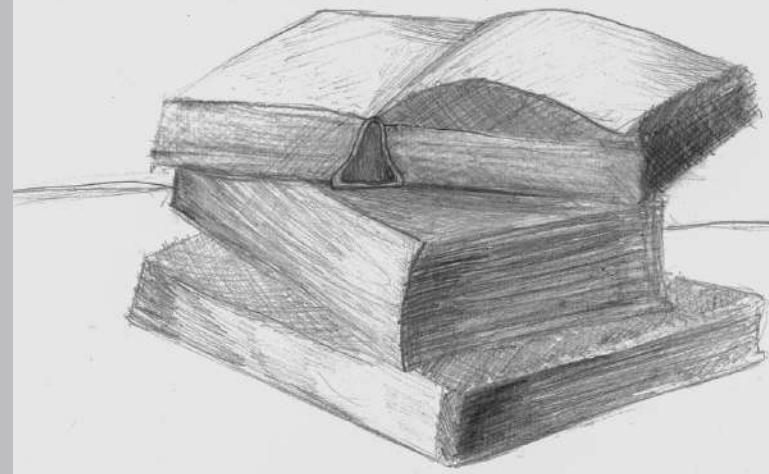
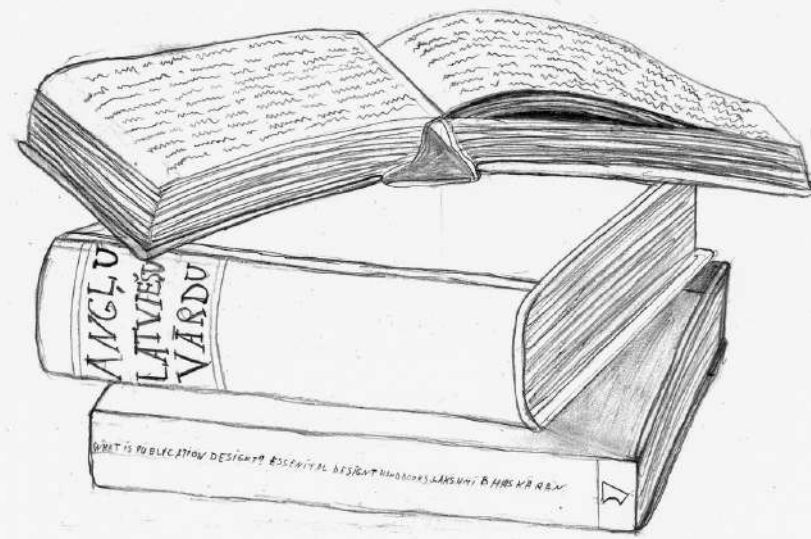
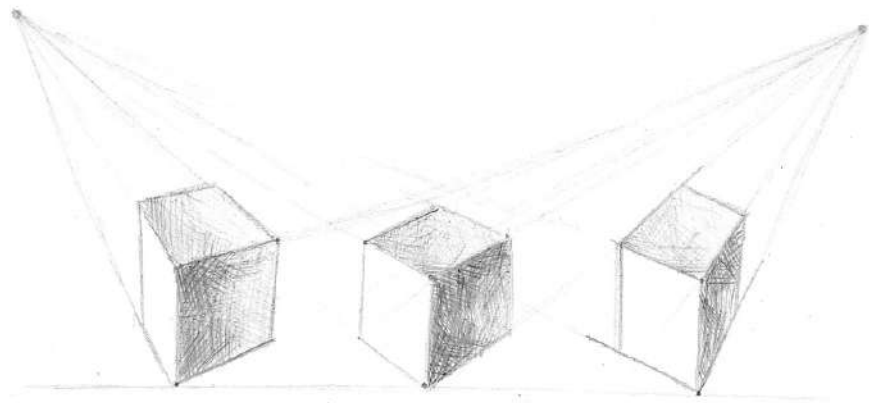
RICARDS T. Y.B.



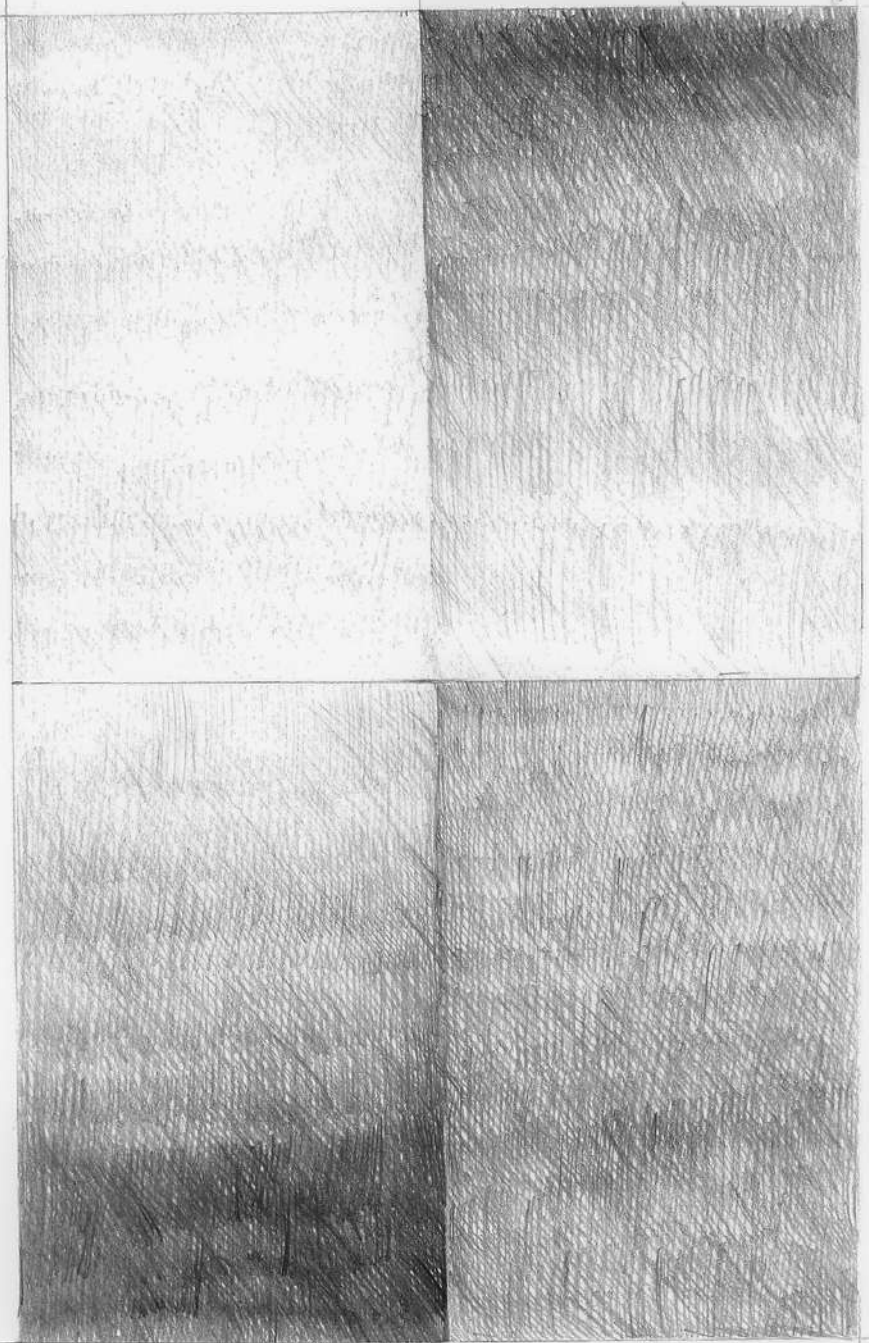
Linda Birge



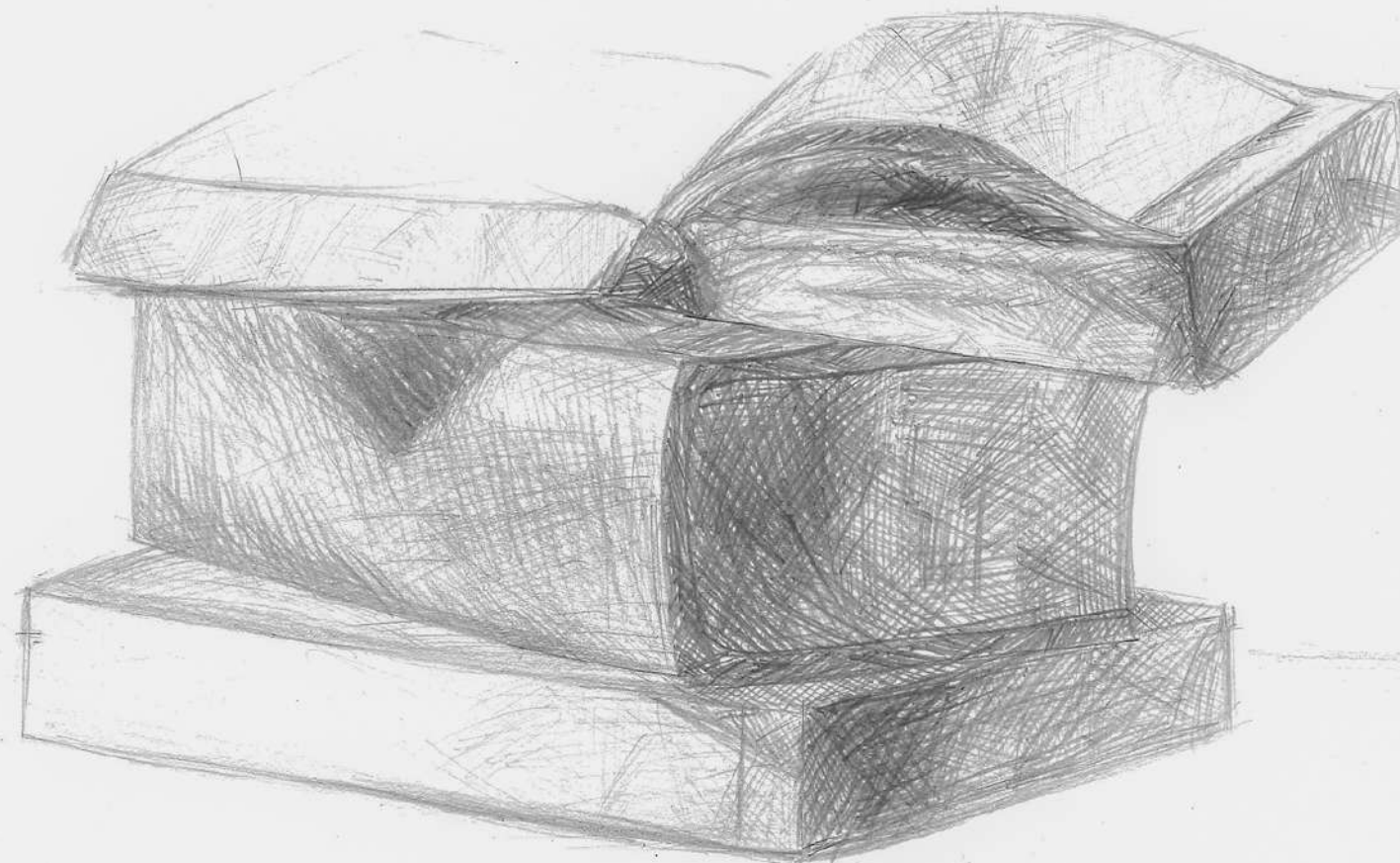
EMILIA LIPSKA

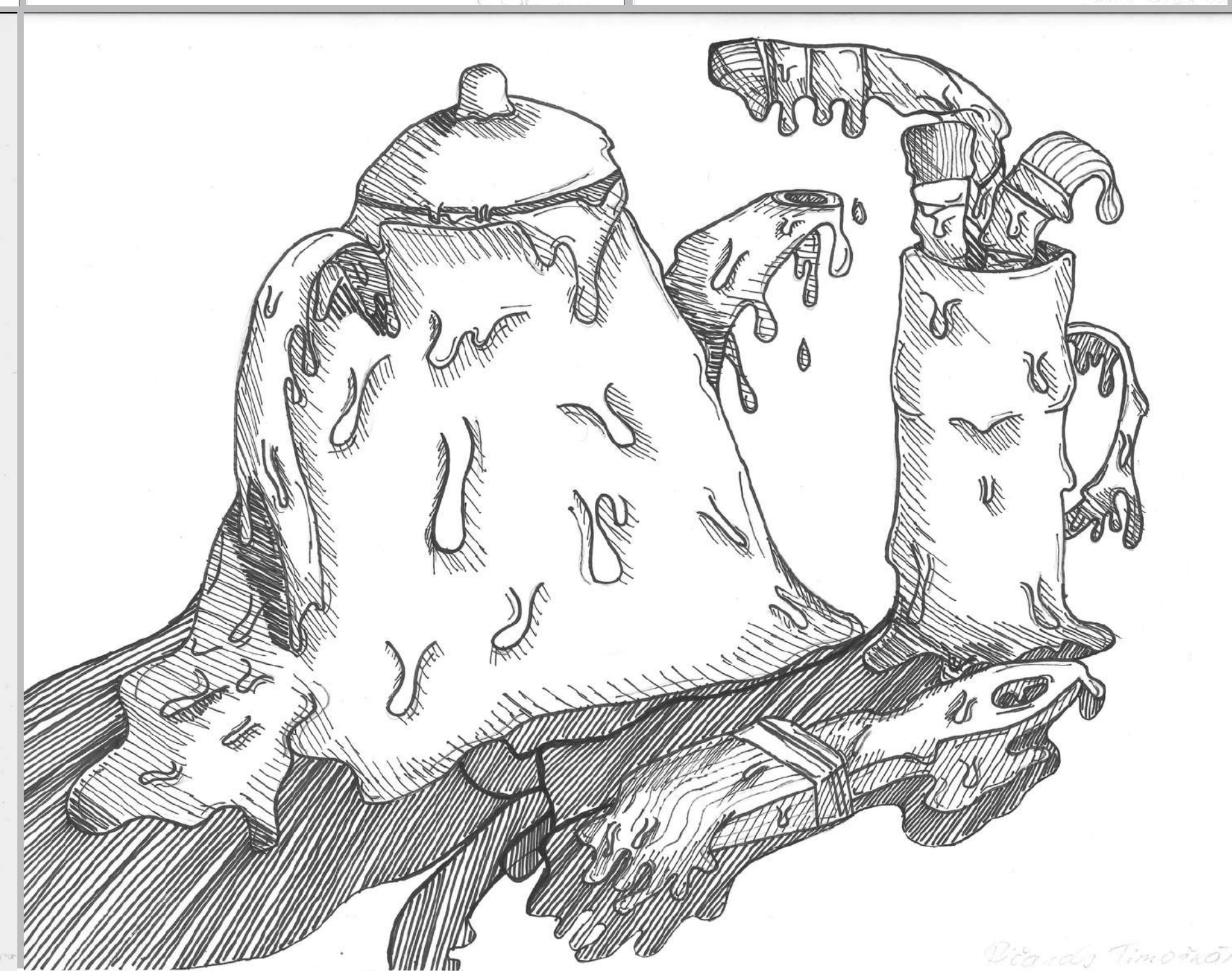
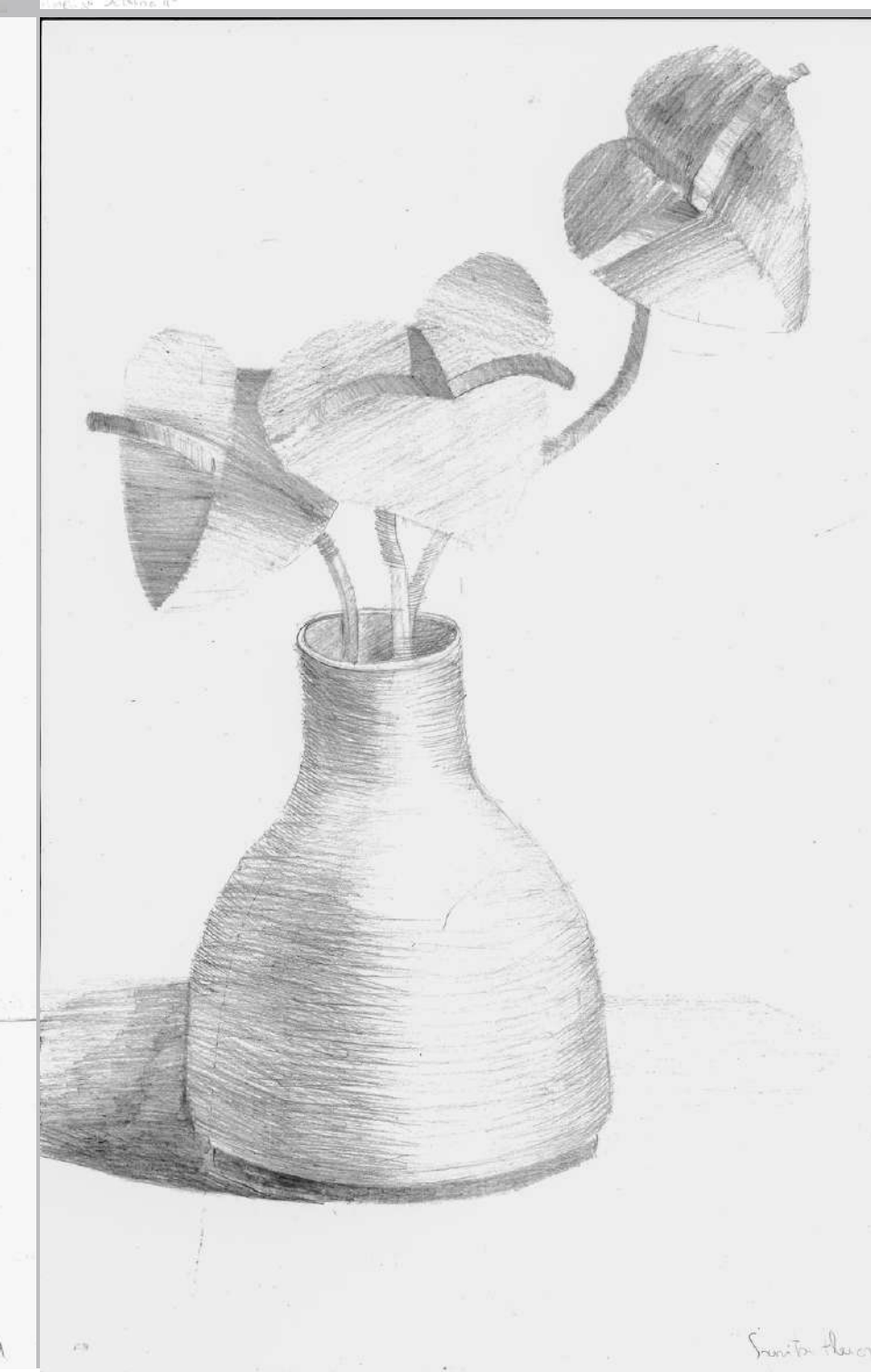
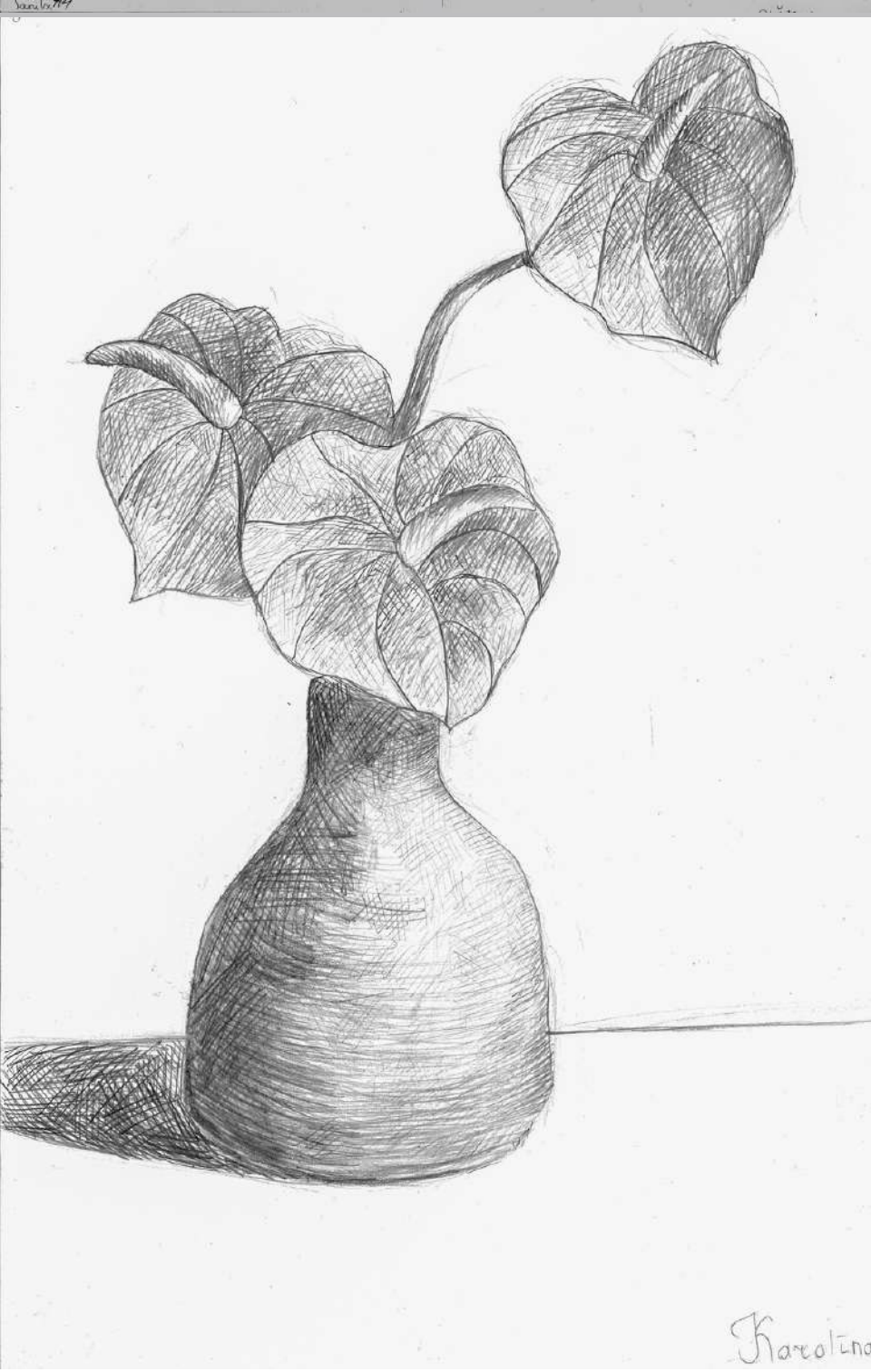
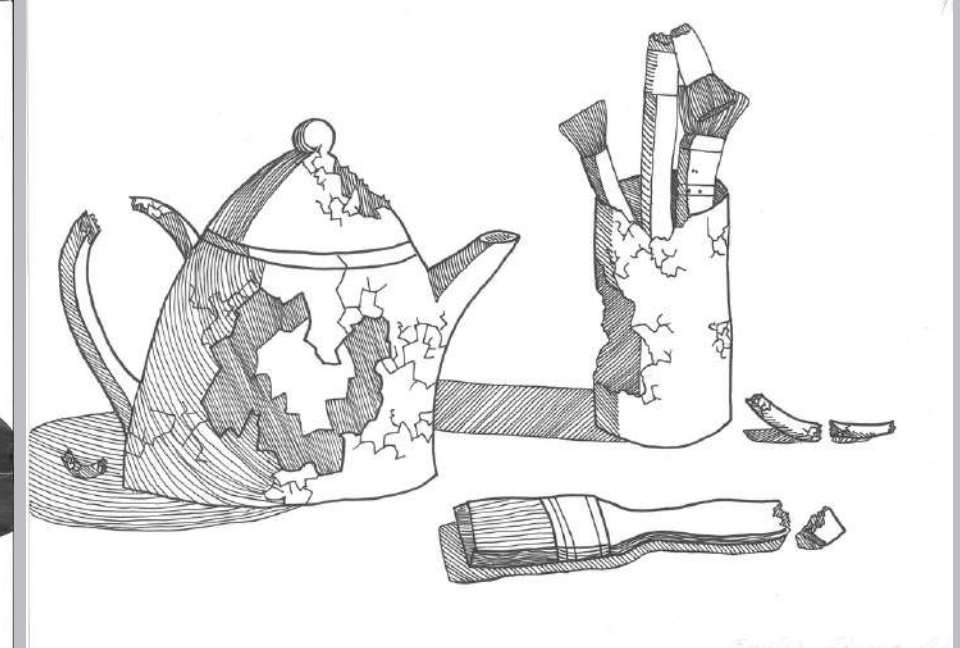
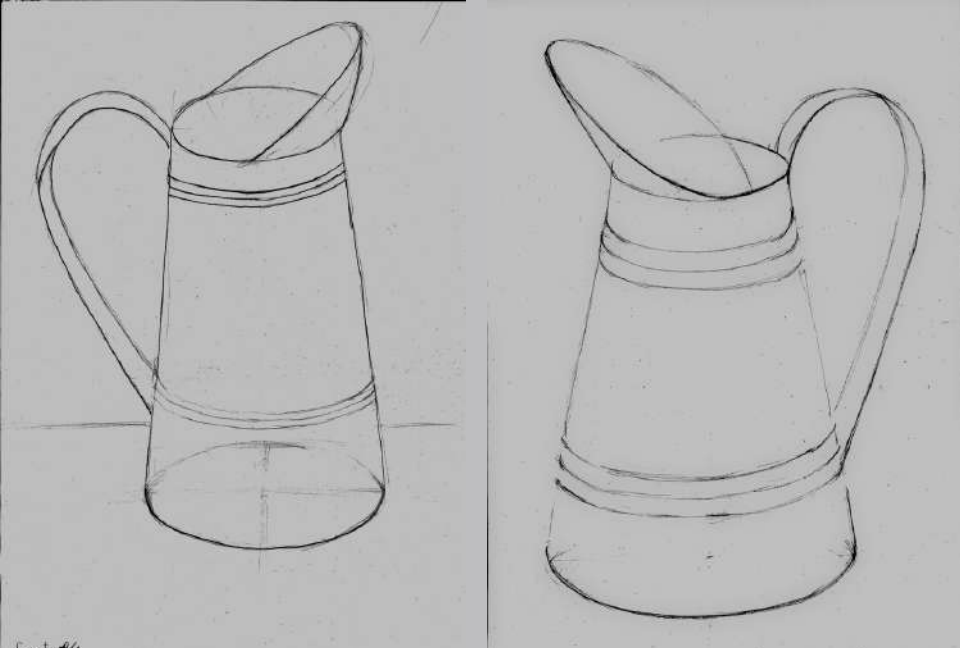


R.T. Umana Boma 4A



EMILIJALIPSKA 4.¹³





6 . K L A S E

Uzdevumi:

1. Radošais zīmējums "Āboli".
2. Materialitātes un telpiskums attēlošana :
 - 2.1. Drapērija (liektu formu štrihošana);
 - 2.2. Stikla priekšmetu zīmēšana - uzstādījums ar stikla trauku, drapēriju un citroniem.
 - 2.3. Tonāls telpauga zīmējums ar melnu pildspalvu .
3. Gaismēna - priekšmetu grupas kompozīcija.
4. Dzīvnieka vai putna zīmējuma kopija - darbs ar mīkstiem grafiņa zīmuļiem.

